

COMUNE DI VILLAMASSARGIA

Provvida di Carbonia - Jassias

PIANO DI ZONA PER L'EDILIZIA SOCIALE COMPARTO C

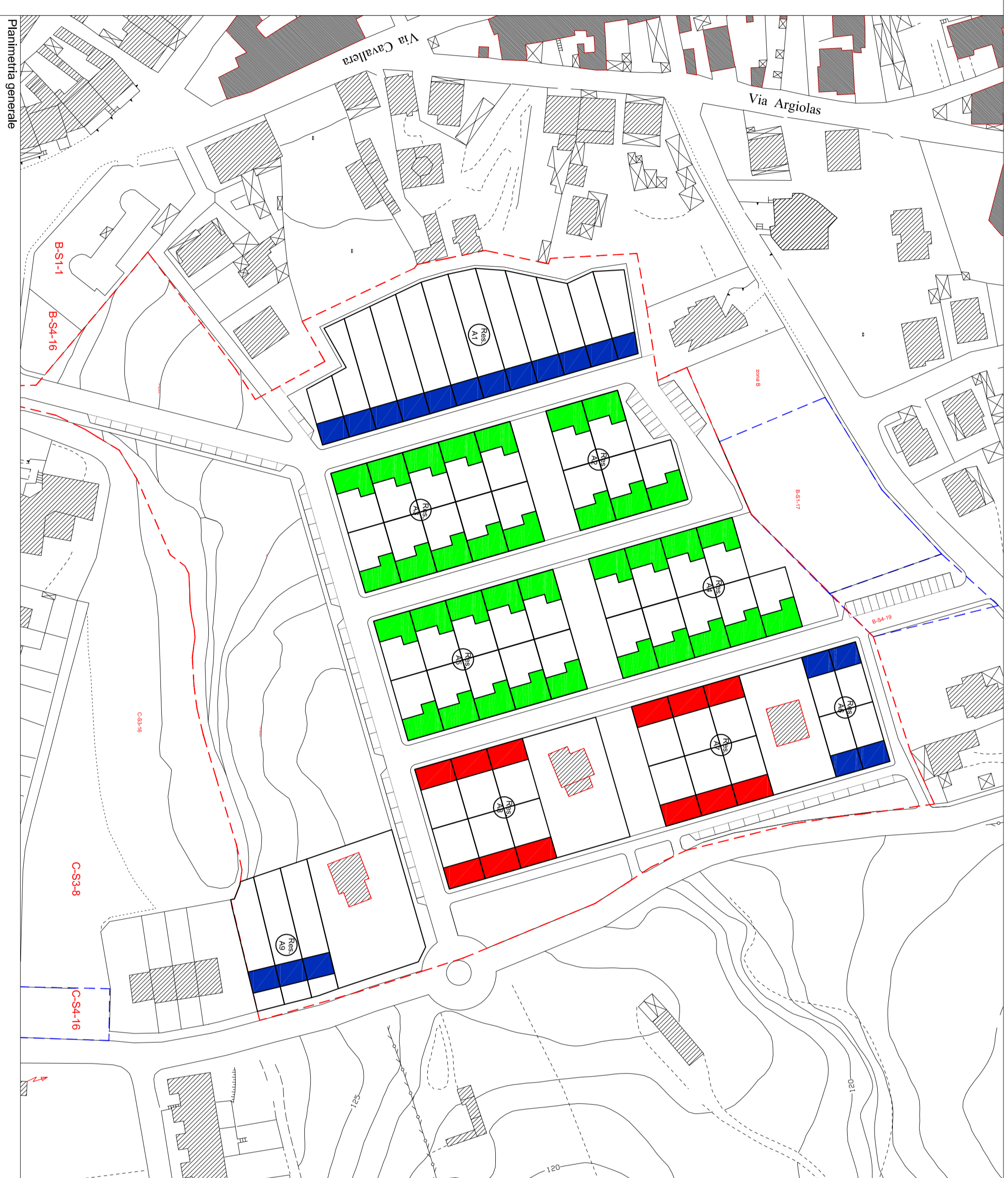


TAV. N. 6
Tipologie edilizie
Scala 1:100

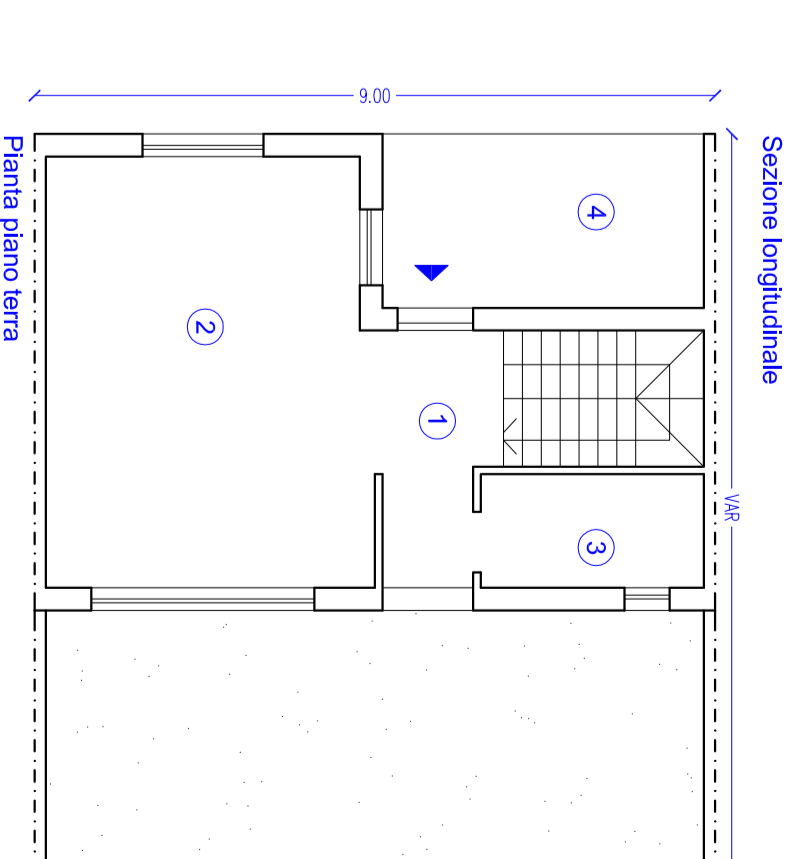
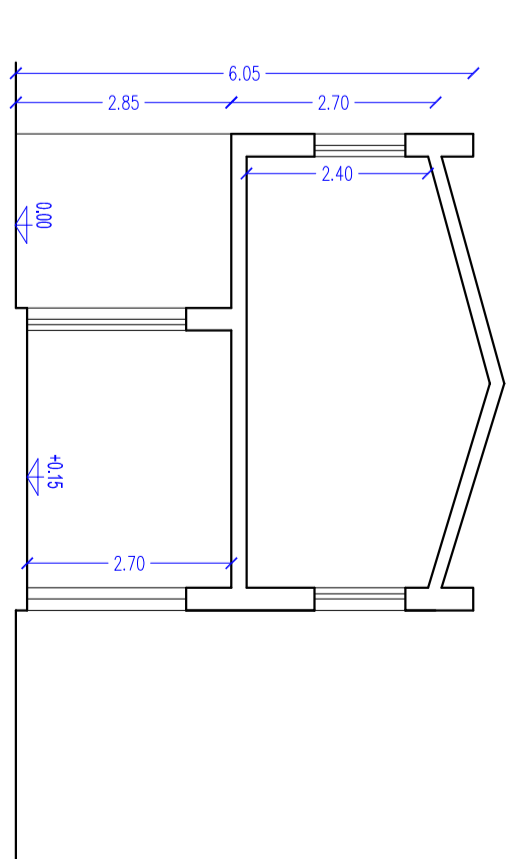
Il Responsabile dell'Ufficio Tecnico Comunale: Ing. Antonello Merda
Consulenza Dipartimento di Architettura – Università di Cagliari
Coordinamento scientifico: prof. Antonio Sanna
Consulenza scientifica: prof. Luciano Maseddu
Consulenza progettuale: arch. Gian Piero Scamru

Il Sindaco:
Franco Porcu

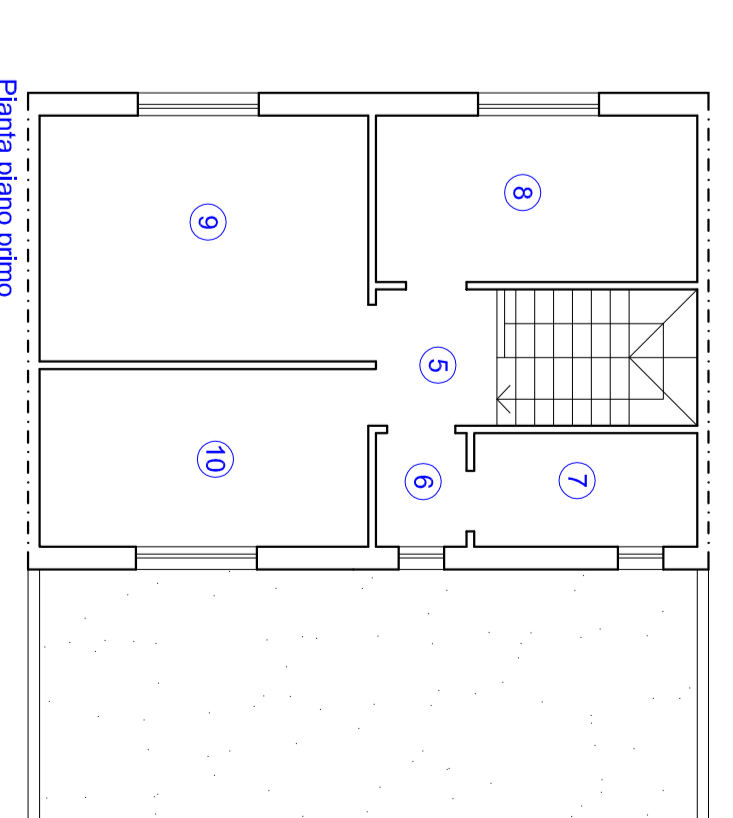
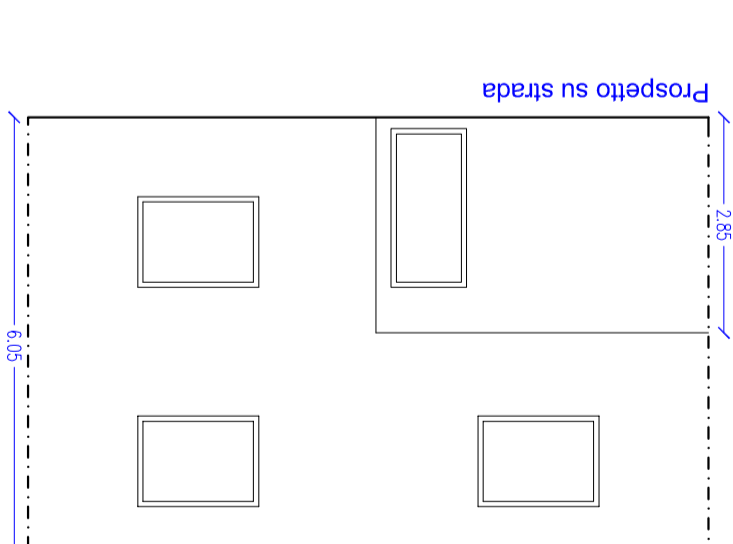
l'Assessore all'Urbanistica:
Ruggiero Lerca



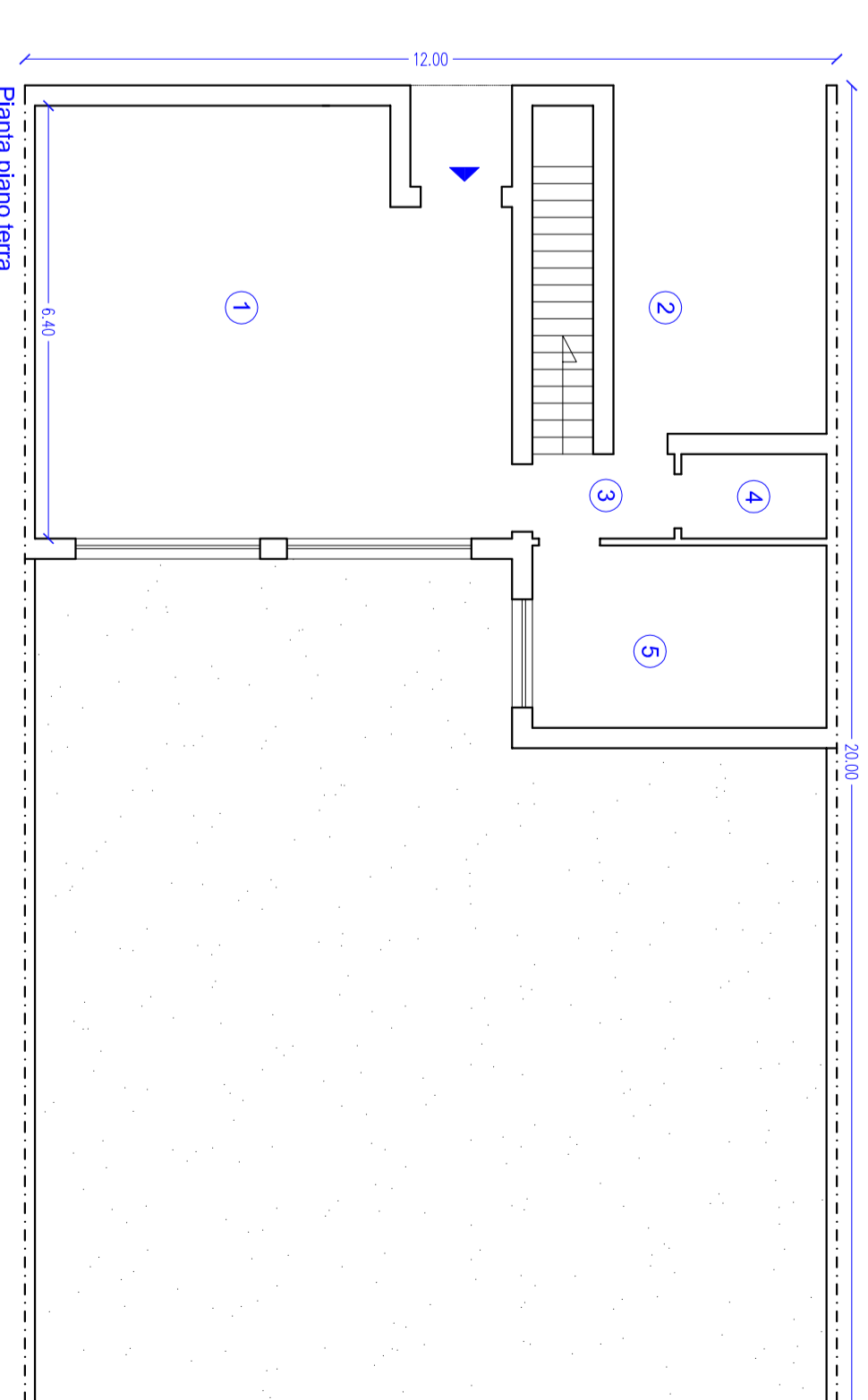
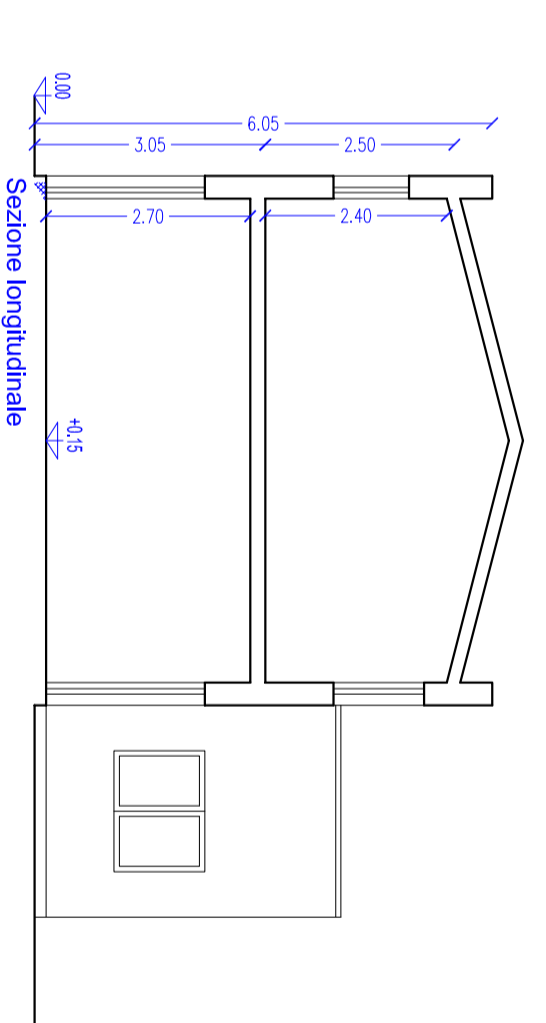
Tipologia a Schiera A (doppio livello)



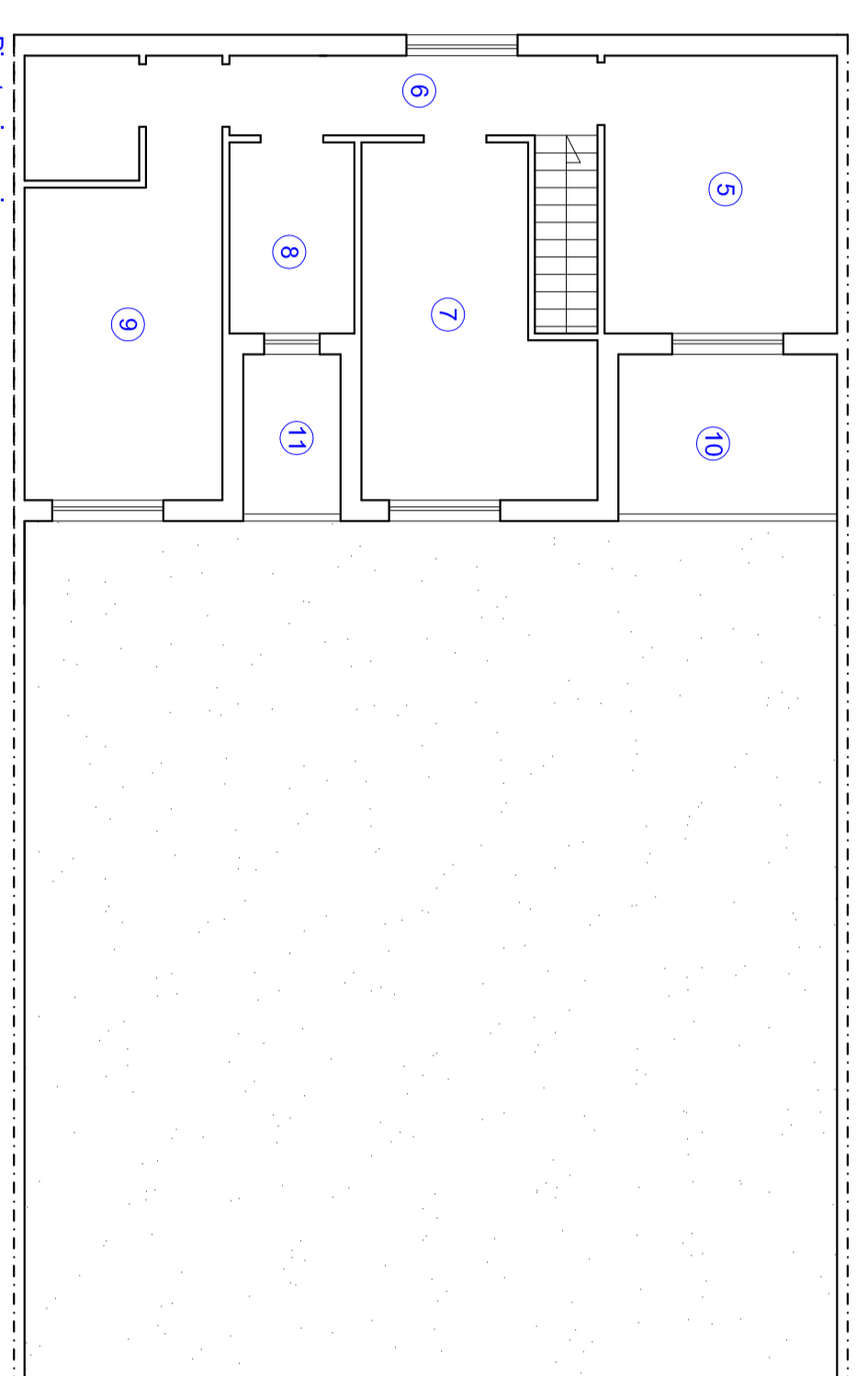
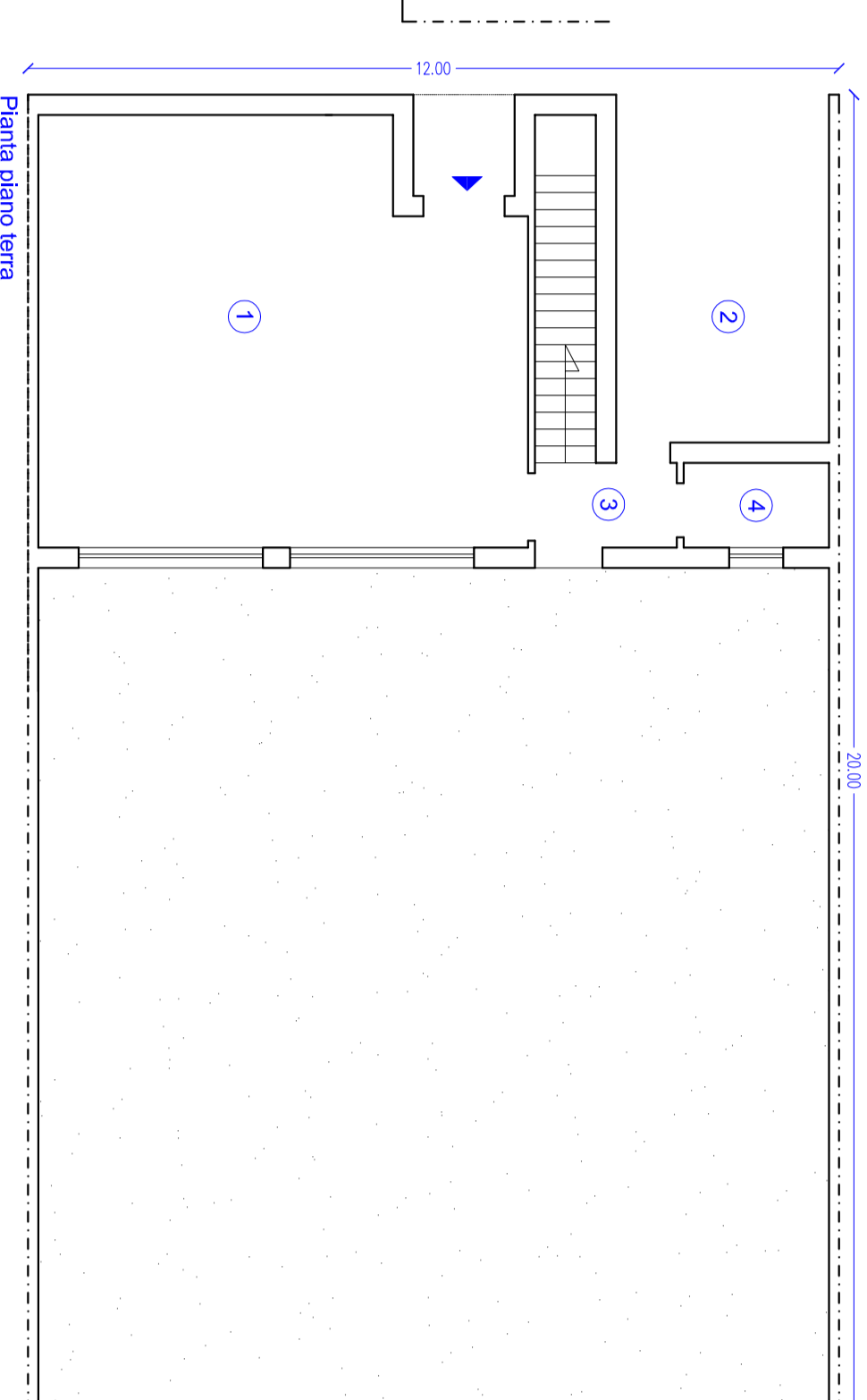
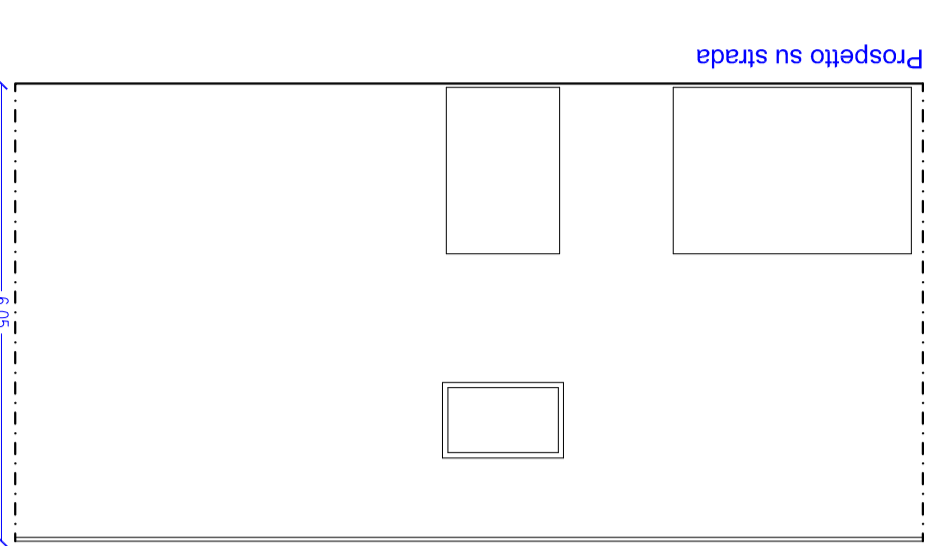
N°	DESTINAZIONE USO
1	INNESTO/PIANOCALDAIE
2	AUTONOMIA
3	DEBITE/DECO
4	BALNO
5	DEBITE/DECO
6	DEBITE/DECO
7	DEBITE/DECO
8	DEBITE/DECO
9	DEBITE/DECO
10	DEBITE/DECO



Tipologia a Corte B (doppio livello parziale)



N°	DESTINAZIONE USO
1	INNESTO/PIANOCALDAIE
2	AUTONOMIA
3	DEBITE/DECO
4	BALNO
5	DEBITE/DECO
6	DEBITE/DECO
7	DEBITE/DECO
8	DEBITE/DECO
9	DEBITE/DECO
10	DEBITE/DECO
11	DEBITE/DECO



N°	DESTINAZIONE USO
1	INNESTO/PIANOCALDAIE
2	AUTONOMIA
3	DEBITE/DECO
4	BALNO
5	DEBITE/DECO
6	DEBITE/DECO
7	DEBITE/DECO
8	DEBITE/DECO
9	DEBITE/DECO
10	DEBITE/DECO

